



megamount 50F / 50 / 50FWS

AUTOMATIC TYRE CHANGER
WITH LOCKING CAPACITY
UP TO 27"



megamount 50F

megamount

megamount

Latest generation of Hofmann Megaplan Tyre Changers, designed and manufactured in Italy. With an emphasis on build quality and ergonomics, key features such as intelligently designed turntable, removeable pedal box, and super-duty fully-automatic operation can be enjoyed as standard across all models.

megamount 50FWS

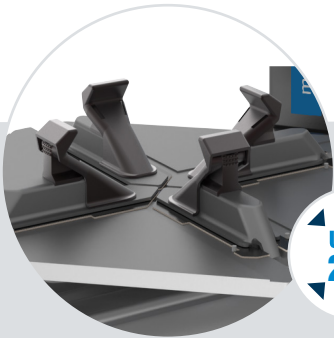


megamount 50



megamount 50F / 50 / 50FWS

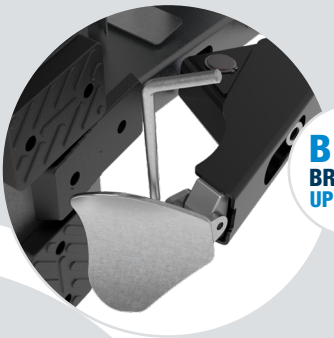
AUTOMATIC TYRE CHANGER
WITH LOCKING CAPACITY
UP TO 27"



UP TO
27"

Locking capacity up to 27"

The heavy-duty (14mm) turntable has a locking capacity from 12" to 27" and utilises a direct clamping system, operated by 80 mm diameter cylinders, ensuring optimal clamping on all types of rim. The shape of the turnplate is designed so as to ease the bead-breaking of the second bead.



BEAD
BREAKER
UP TO 15"

Bead breaker up to 15"

Ergonomic bead breaker with adjustable arm system which enables to operate on large wheels up to 15" width.

Double rotation system

Motor with dual rotation clockwise and counterclockwise and double speed controlled by pedal. 400V/50-60Hz/3ph motor.

DOUBLE
SPEED
— 2X —

Inflating gun

Professional tyre pressure gun with manometer. For a tyre pressure up to max 10 bar. MM50F is complete with Michelin inflating gun. MM50 and MM50FWS are complete with standard inflating gun.

10 bar

HELPING DEVICE SYSTEMS

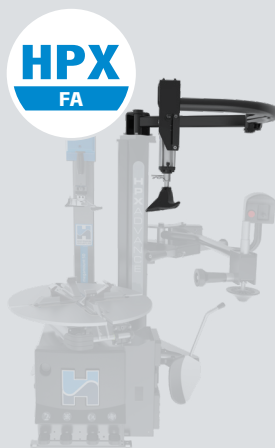
To make the *megamount50* even more functional, it is possible to choose the configuration of the following arms according to the real needs. *Megamount50F* is equipped with the HPX-ADVANCE + HELPER ARM assist systems as standard. *Megamount50FWS* is, instead, supplied with HPX-WS.



HPX
ADVANCE



HPX
STD



HPX
FA



HPX
WS



HELPER
ARM

HPX-ADVANCE

HPX-STD

HPX-FA

HPX-WS

HELPER ARM

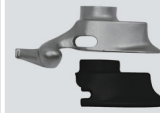
Standard accessories



Bead lever



Front head protection
(x2)



Rear head protection
(x2)



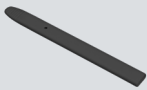
4 jaws ALU
protection kit (only for
MM50F/FWS)



Tool-holder (only for
MM50F/FWS)



Rim protection (only for
MM50F/FWS)



Plastic lever protection
(only for MM50F/FWS)



Bead breaker blade
protection (only for
MM50F/FWS)

Optional accessories



Wheel lift



Roller board



External inflating kit



Run Flat clamp



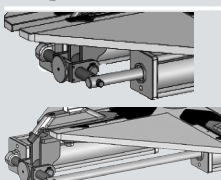
Jaws for motorcycle
wheels 14" ÷ 24"



Jaws for scooter
wheels 8" ÷ 14"



Bead-presser with
pulling system



Adjustable
clamping system
(increased clamping
capacity 10" ÷ 27")

Versions on request

TI Version: with an effective inflation device for bead seating integrated in clamping jaws

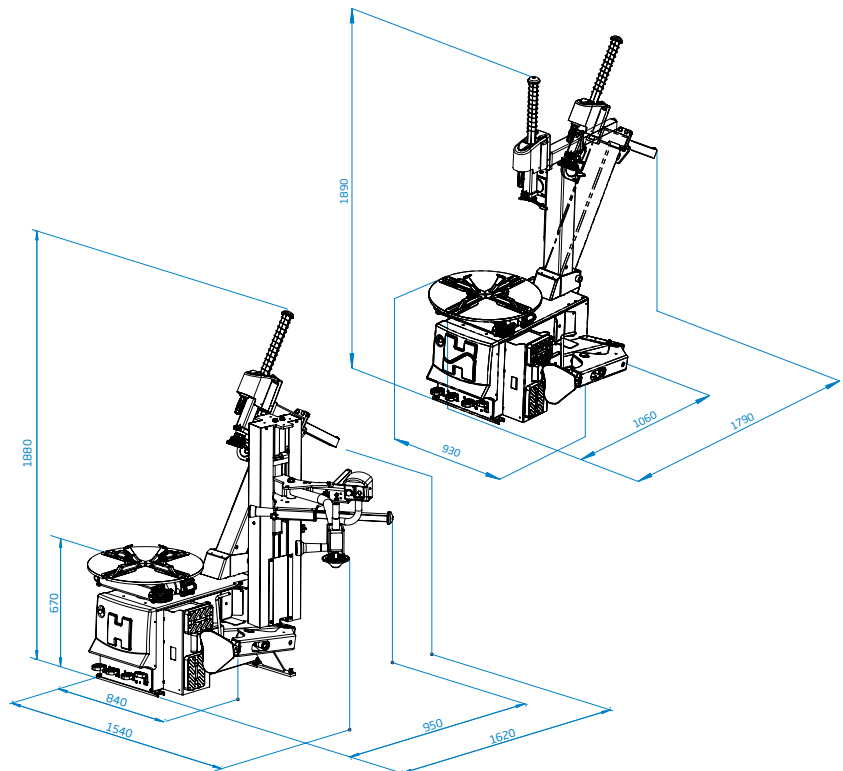
A Version: with pneumatic positioning of tool arm

Pedal-operated inflating Version: with manometer and CE-certified inflation pressure limiter

Motoinverter Version: with progressive variation of speed

Single speed version: 110V/60Hz/1ph

Single speed version: 220V/50-60Hz/1ph



Technical Data

Clamping capacity	12" ÷ 27" (min ÷ max)
Internal clamping	14" - 27"
External clamping	12" - 24"
Max wheel diameter	1170 mm (46")
Max wheel width	360 mm (16")
Bead breaker force	15000 N
3-Phase	0.75 kW 400V - 50/60 Hz (2 speed)
Turntable speed	8 - 16 rpm (3ph - 2 speed)
Operating pressure	8 - 10 bar (116 - 145 psi)
Noise level	< 70 ± 3 dB (A)
Net weight	260 kg



HOFMANN MEGAPLAN

Call 01480 8-9-10-11

www.hofmann-megaplan.co.uk